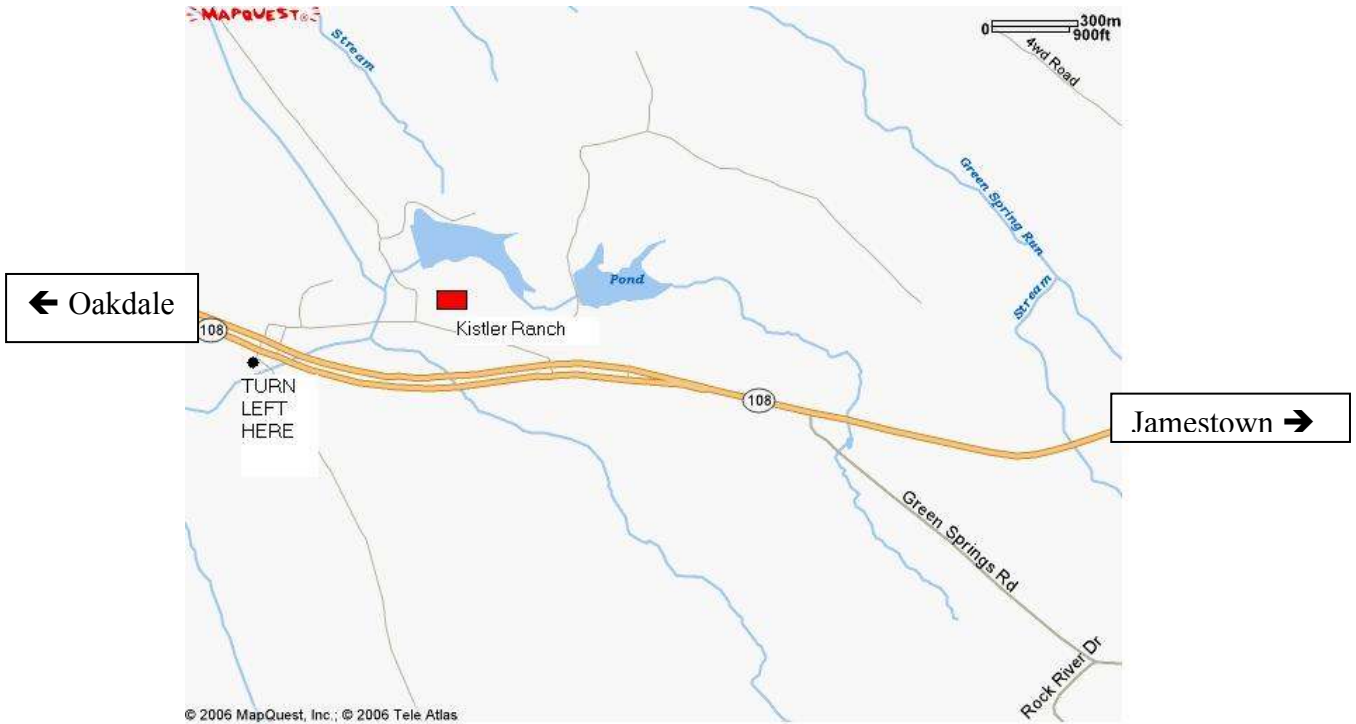


Tracy Fly Fishers May Outing Kistler Ranch Bass Ponds



Directions: Kistler Ranch is approximately 18 miles east of Oakdale on Hiway 108. As you approach the end of the divided highway, be looking for a left hand turn to the entrance of the ranch. If you miss the left turn and see the red barn with the white "K-arrow" on it (to your left), make a U-turn about a quarter mile up the highway where the divided highway comes to an end.

Gear: 5 to 8 wt rods with floating, intermediate or sinking lines. Short (5 to 6 foot) 3x leaders for bass or 3x-5x for bluegill and crappies. Fishing License, Float Tubes, Fins, Waders and don't forget the Hat, Sunglasses and Suntan Lotion! **Personal floatation devices are recommended and are MANDATORY for all kids !!**

Fly patterns: Balsawood and Deer Hair Poppers (all sizes), Leech patterns, and yes... don't leave those Wiggle Tails at home! Additionally, if you have a pop-up shade structure, bring it along with camp chairs (**shade trees are sparse**).

Please remember... this is our annual TFF Family event... only open to TFF members and their immediate Family (including grandkids and your siblings)... please, no guests. This is one of the benefits of your Tracy Fly Fishers membership.